



# NINJA-2

**HDMI™** Field Recorder, Monitor & Deck, Playback & Playout Device



## 10-bit Smart Production for DSLRs & HDMI Cameras

**Record → Monitor → Playback+Playout → Edit-Ready**

**Uncompressed 8/10-bit**

↓

**ProRes | Avid DNxHD™**

↓

**HDD | SSD**

**NINJA 2**

**4.3" SCREEN**  
800x480 / 16:9

**Focus + Exp. Assist**

**Playback on-screen or external monitor**

Instantly review, navigate, mark and tag your recorded footage

**HDMI I/O**

**BROADCAST**  
10-BIT 4:2:2,  
1920 x 1080

**MASTER CADDY HDD/SSD** → **DOCK** via USB 3/2 → **MAC & PC COMPATIBLE**

**Mac & PC compatible**

# ATOMOS NINJA-2

## YOUR 10-BIT HDMI SMART PRODUCTION WEAPON



**AtomOS**  
**Easy-to-use Touchscreen Operating System**  
 Access all of the Ninja-2's operations via the fast, responsive touch interface. The real power of the Ninja-2 comes from AtomOS, our innovative and intuitive operating system.

**One-touch Navigation**  
 allows for simple operation – everything is one touch away.

AtomOS upgrades are provided free of charge, via download.

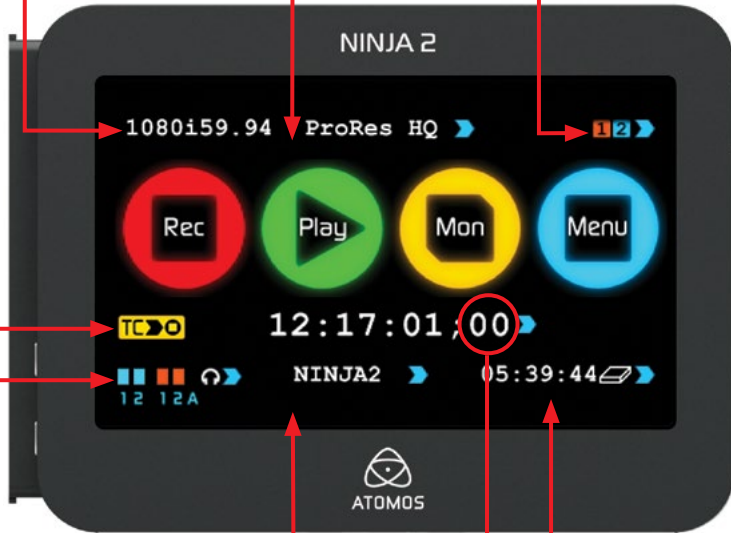
**Record Trigger**  
 Select to arm and record using the timecode start/stop from your camera over HDMI (if supported by the camera - check the Atomos website for supported cameras).

**Audio Input Level Meters + Headphone Line Out Volume**  
 Touch audio meters to adjust headphone volume, 4 channels of audio and analogue gain.

**Current Video Input Format**  
 Displays native format from source signal ie. 1080i 59.94

**Recording Format**  
 Select the bit-rate of ProRes® or Avid DNxHD® codec. (Avid DNxHD requires online activation)

**Continuous Power Battery Indicator**  
 Shows which battery is currently being used to power the Ninja-2. You are free to replace the one that isn't being used, the active battery is illuminated orange.



**Unit Name**  
 Name your Ninja-2 by project or camera. Media drives and recorded files are subsequently named with the unit name upon formatting.

**Timecode**  
 Choose between Onboard, time of day, record run or auto restart timecode modes or utilise external timecode from camera or any source input.

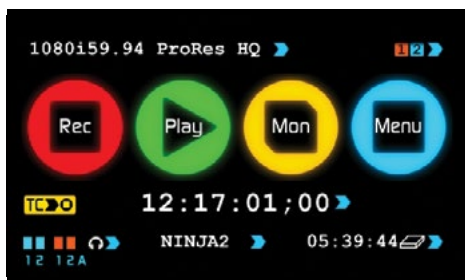
**Time Remaining**  
 Shows remaining record time. Remaining time is calculated dynamically and is based on the bitrate of the current recording format and the memory capacity of the HDD/SSD in use.

**Master Caddy Slot**  
 Simple, locking HDD/SSD system. A safe, practical solution to media management

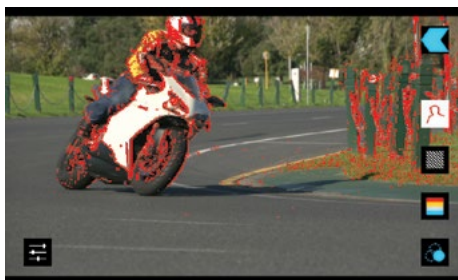
# ATOMOS SMART PRODUCTION

## ALL THE FEATURES YOU'VE ASKED FOR, AND MORE...

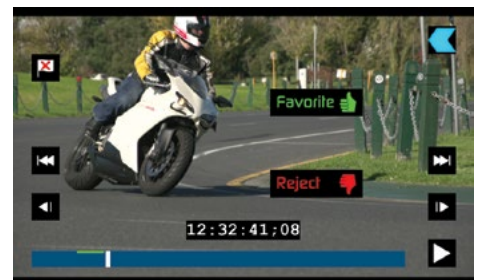
**Rec One-touch Recording**



**Rec Mon One-touch Monitoring**



**Play Edit One-touch Review**



### SmartControl

Start/stop trigger from rolling timecode (Canon and Sony HDMI timecode-supported cameras only) and HDMI start/stop flags present in selected Canon cameras.



### SmartMonitor

Accurately assess focus and exposure with:

- Focus Peaking**
- Adjustable Zebra**
- False Color (two modes)**
- Blue Only - Exposure Check**
- Adjustments for individual filters**

### SmartLog

Log in and out points on your footage and tag these clips with keywords such as 'good shot' (Favourite) or 'bad shot' (Reject).



With the Ninja-2 this part of the post production process can now be done on set, or on the move, with Continuous Power.

SmartLog operates while in Monitor or Playback mode. It saves time, money and allows fast, collaborative pre-editing prior to final post production in Apple Final Cut Pro X.



## Online or Offline, Master or Back-up

### 10-bit 4:2:2, 220Mbps, 2.5" HDD or SSD

Professional media production is all about balancing quality, cost and time. We understand this dynamic and our aim is to redefine the digital recording workflow to maintain the highest recording quality, minimize the time taken to move video from camera to computer and lower the cost of production using affordable, high capacity, high speed media.

The Ninja-2 takes any uncompressed HD or SD source and encodes it in real-time to 10-bit, 4:2:2 Apple ProRes or Avid DNxHD at up to 220Mbps. Both are class-leading codecs for production, broadcasting, editing and post-production. Because we are portable, we can record from the ultimate image source, the sensor of the camera.

The Ninja-2 always records in 10-bit, even from an 8-bit source. We add color registries for incorporating higher bit-depth graphics from CG, animation and special effects. This avoids banding and makes editing and grading, in fact any precision effect, more accurate.

## Any or HDMI or HD-SDI source...

### DSLRs, Decks, Switchers, PC, Mac, iPad & iPhone

Ninja-2 has HDMI In as standard and can accept HD-SDI input with the addition of a Connect S2H or Connect-AC S2H.



## Nikon/Sony/Panasonic/Canon/Red/Arri/JVC/GoPro

Whether you're a Hollywood DoP needing a high quality review and tagging tool from an Arri, RED, Canon or Sony camera, or an independent filmmaker using a Nikon DSLR for end-to-end digital production, the Ninja-2 makes all types of production faster, better and easier, and at very little cost.

James Cameron used Atomos field recorders on his *Deep Sea Challenge* - need we say more? From 4 miles down to 20,000 feet up, Ninja-2 will record your adventures in super high quality - it's got you covered on land, air and sea!



## Ready to deliver, high-capacity HDD or SSD No more expensive memory cards!

Ninja-2 frees you from the financial and operational constraints of expensive Flash media (eg. SxS and P2) and aggressive compression (MPEG-2) by allowing you to use cheap, commodity storage that's available anywhere.

Choose inexpensive 2.5" hard disk drives (spinning disks) for 90% of projects and Flash-based SSDs for rough terrain or high security use. HDDs are now cheaper than tapes! Store them on a shelf or hand them to your client. Modern commodity storage is extremely reliable.

A 750GB/7200rpm drive holds up to 16 hours of high quality Apple ProRes® footage.

### Supported Drives

**HDD:** Western Digital, Hitachi, Samsung, Toshiba

**SSD:** Intel, SanDisk

**Latest recommended drives:** [atomos.com](http://atomos.com)



## 800x480 screen with 170° viewing and loop play

### Focus Peaking, Zebra, False Color & Blue Only Exposure



The Ninja-2 replaces your current monitor with sharper images, better direct sunlight performance, loop play and professional monitoring tools such as Focus Peaking to help you really nail that shot.

Combining monitoring with other essential production and post production tasks is just another example of why the Ninja-2 is a Weapon of Smart Production.



## Pristine Playback & Payout SmartLog - Just Mark & Tag

Use your Ninja-2's 800x480 16:9 screen to navigate through and review your footage, to mark in and out points and input XML tags. Instantly show your material to production colleagues, clients or talent, and check each shot in detail, during or after the shoot - logging their suggestions without leaving the set. Review and log an entire day's shoot on-set, or while travelling, with high-quality playback and comprehensive clip logging & navigation controls.

Just touch "Play" on the Ninja-2 touchscreen and view your full HD recordings, with up to of 10 hours playback and editing on one battery charge (and don't forget our patent-pending Continuous Power for unlimited operation in the field).



## Instant editing on MAC or PC!

The Ninja-2 seamlessly migrates your productions to the efficient and cost-effective world of file-based workflows. By recording directly to a production-quality, edit-friendly format, it bypasses the codec in the camera and eliminates time-consuming capture and conversion.



The Ninja-2's tight integration with Apple ProRes® and Avid DNxHD means recorded footage is instantly and natively editable in Final Cut, Media Composer, Premiere Pro, EDIUS, Vegas and Lightworks.



## What's in the box

Ninja-2 works right out of the box, you can be using it within minutes! We supply everything (except storage media).

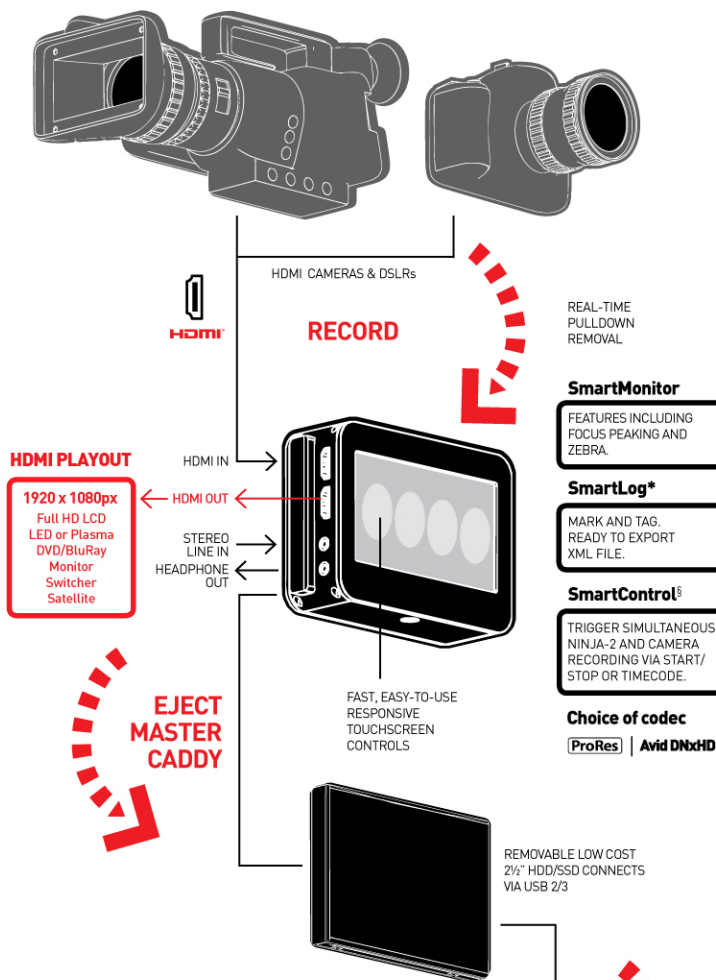
Contents may differ from those shown here.

# FROM SENSOR TO EDIT SUITE UNCOMPRESSED 10-BIT HD/SD

# NINJA-2 TECH SPECS

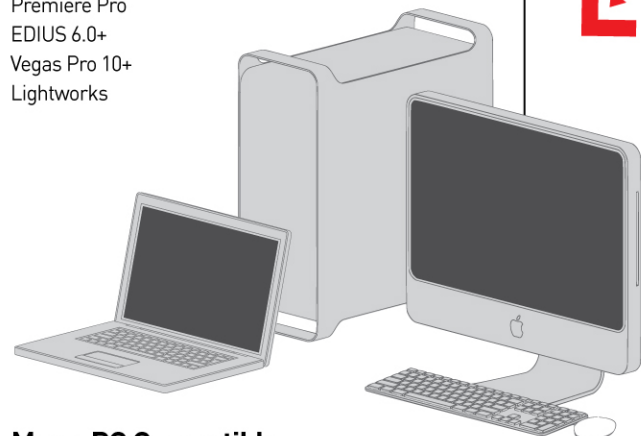


## ► Uncompressed 8/10-bit HD/SD from HDMI to AppleProRes® or Avid DNxHD® on HDD/SSD



## ► Ready to Edit

- FCPX/FCP7+
- Media Composer 5.0+
- Premiere Pro
- EDIUS 6.0+
- Vegas Pro 10+
- Lightworks



## Mac + PC Compatible

## Ninja-2 Main Unit

<b>Light Weight</b>	370g / 13oz (without batteries & HDD) 670g / 23.5oz (with batteries & HDD)		
<b>Dimensions</b> (without batteries)	115(W)x87(H)x41(D)mm		
<b>Construction</b>	Aircraft grade aluminium for durability + portability. Fanless for silent operation.		
<b>Operating Power</b>	3.0W (Monitoring Only) / 6.0W (Rec, Mon & Play)		
<b>Batteries</b> 7.2V-14.4V Battery System Compatible any source NP Series D-Tap and supporting accessories	<b>All 7.4v</b> 1. 2600mAh - Up to 10hrs 2. 5200mAh - Up to 20hrs 3. 7800mAh - Up to 30hrs 4. AC Adaptor (included) 5. D-Tap Adaptor (sold separately)		
<b>Continuous Power*</b>	Primary-Secondary battery system. Change batteries without losing power. Loop batteries continuously. *Patent Pending		
<b>Touchscreen</b>	Size: 4.3" diagonal. Resolution: 800x480. Aspect Ratio: 16:9 native / 4:3 Letterbox. SMPTE Colour Specification Native Frame Rate Playback (48-60Hz)		
<b>Video Input</b> Uncompressed 10/8-bit 4:2:2 Simultaneously displayed on internal 4.3" Ninja-2 screen	HDMI x 1 HD-SDI/SD-SDI (with optional Connect SDI → HDMI converter)	HDMI 1.4	
<b>Video Out</b>	Reclocked, ultra low jitter professional grade HDMI output, "HDMI 1.4"		
<b>Supported Formats (In/Out)</b>	<b>HD 1080i60, 1080i59.94, 1080i50, 1080p30, 1080p25, 1080p24, 1080p23.98, 1080p30(60i), 1080p25(50i), 1080p24(60i), 1080p23.98(60i), 720p60, 720p59.94, 20p50, SD 486i59.94, 576i50</b> pSF - Progressive Segmented Frame modes are recorded to Progressive rates Most HDMI cameras output 24P, 25P and 30P as 50i or 60i see <a href="http://www.atomos.com/support">www.atomos.com/support</a>		
<b>Realtime Hardware Encoding</b> 1920x1080 8/10-bit 4:2:2 to:	<b>ProRes*</b> HQ - 220Mbps 422 - 150Mbps LT - 100Mbps	<b>Avid DNxHD*</b> Avid DNxHD-220X - 220Mbps (10-bit) Avid DNxHD-220 - 220Mbps (8-bit) Avid DNxHD-145 - 145Mbps (8-bit) Avid DNxHD-36 - 36Mbps (proxy)	
<b>Audio input</b>	HDMI 2 channel + 2 analog channels with gain controls.		
<b>Audio Output</b>	HDMI 2 channel Analog line and Headphone		
<b>Timecode</b>	Sony and Canon compatible HDMI timecode in and out		
<b>Recording Time</b>	<b>Edit Formats</b> (I-Frame Only, 422, 8/10-bit)	<b>HDD or SSD</b>	
HDD & SSDs are hot swappable on the fly in the field		<b>250GB</b>	<b>500GB</b>   <b>1 TB</b>
	<b>ProRes* HQ (10-bit, 220Mbps)</b> 2.5 hrs <b>Avid DNxHD-220x (10 bit, 220Mbps)</b> 2.5 hrs <b>ProRes* 422 (10 bit, 150Mbps)</b> 4 hrs <b>Avid DNxHD-145 (8 bit, 145Mbps)</b> 4 hrs <b>ProRes* LT (10 bit, 100Mbps)</b> 5.5 hrs <b>Avid DNxHD-36 (36Mbps)</b> 15 hrs SD not supported by Avid DNxHD	5hrs 8hrs 8hrs 11hrs 30hrs	10hrs 16hrs 16hrs 22hrs 61hrs

## Master Caddy & Accessories

<b>Master Caddy Case for HDD or SSD</b> 2.5" SSD or HDD minimum 5400rpm to 10,000rpm Standard 9.5mm height	75x105x12mm
<b>Master Caddy Dock</b>	2.5" internal drive SATA to USB2.0/3.0
<b>Supported Applications</b>	FCPX/FCP7+ / Media Composer 5.0+ / Premiere Pro / EDIUS 6.0+ / Vegas Pro 10+ / Lightworks
<b>Accessories included</b>	<ul style="list-style-type: none"> <li>• Universal Battery Charger 110-240V</li> <li>• Docking station (includes USB cable) • 2 x Master Caddy Cases</li> <li>• 1 x Atomos 2600mAh battery</li> </ul>
<b>Optional extras</b>	<ul style="list-style-type: none"> <li>• 5 x Master Caddy Cases</li> <li>• Carry Case</li> <li>• Replacement Foam</li> <li>• Connect H2S converter</li> <li>• Connect S2H converter</li> </ul>

\* SmartLog currently only supported by FCP X.

‡ Certain Canon and Sony models only.

Avid DNxHD is HD only, not SD.

Last updated May 2013.



**Expandore Electronics Pte Ltd**  
705, Sims Drive, #05-12A  
Shun Li Industrial Complex  
Singapore 387384

Enquiries: [sales1@expandore.com](mailto:sales1@expandore.com) | Telephone: +65 6841 2889 | [www.expandore.com](http://www.expandore.com)